

## Melbourne's Stormwater and Sewerage Systems

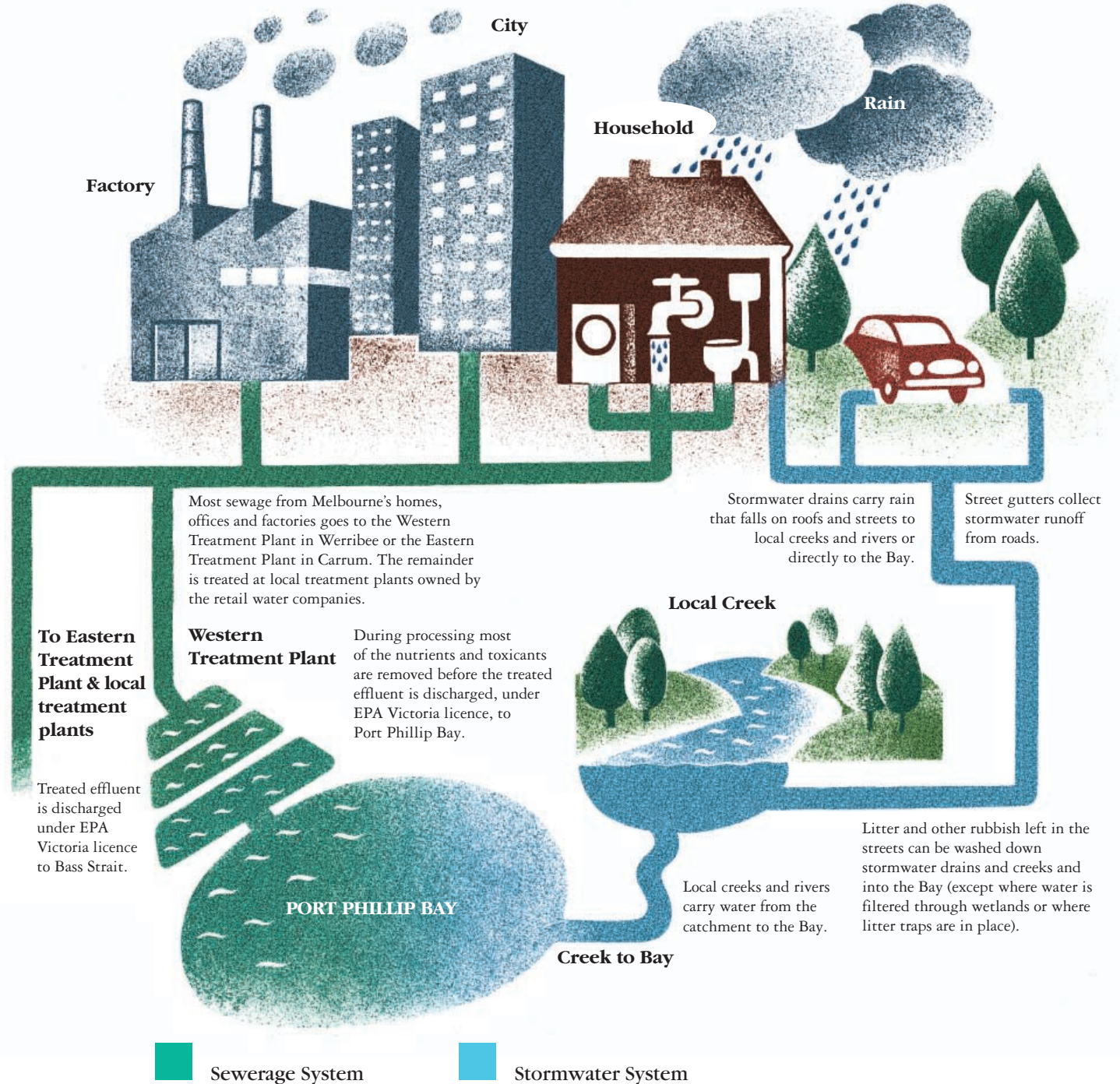
Melbourne's stormwater and sewerage systems, as in most Australian cities, are separate systems designed to operate independently.

The stormwater system carries rainwater from streets and private properties and discharges it to local waterways and ultimately to Port Phillip Bay or Western Port.

The sewerage system carries most of Melbourne's sewage for treatment at the Western Treatment Plant in Werribee or the Eastern Treatment Plant in Carrum. About 94% of Melbourne's sewage is treated at these plants. The remainder is treated at local treatment plants, owned by Melbourne's retail water companies.

Unfortunately, some properties in Melbourne have their stormwater (mainly water runoff from roofs) going directly into the sewerage system. This results in extra volumes of water entering the sewers which may cause them to overflow.

Drainage connections to the sewerage system are not permitted because they can cause overflows which threaten to pollute our waterways and bays. This issue is being addressed by Melbourne's retail water companies.



Overflows can also sometimes occur when equipment fails or a sewer blocks. The safety valves are located near watercourses to minimise the risk of overflow into streets or private property, and to dilute possible pollution.

A great deal of litter and other pollutants can be washed into our stormwater drains and therefore end up in our waterways and bays. Melbourne Water undertakes such activities as installing litter traps and constructing wetlands to reduce stormwater pollution.

To minimise the impact of stormwater runoff on our waterways, Melbourne Water has implemented new drainage standards, which involve "retrofitting" older urban areas with new stormwater treatment measures. New developments incorporate water sensitive urban design techniques to improve stormwater quality. Melbourne Water is also working with local councils to develop stormwater management plans.

Melbourne Water is owned by the Victorian Government. We manage Melbourne's water supply catchments, remove and treat most of Melbourne's sewage, and manage waterways and major drainage systems.

For more information please visit:

[www.stormwater.melbournewater.com.au](http://www.stormwater.melbournewater.com.au)

or call 131 722



© Melbourne Water Corporation

100 Wellington Parade

East Melbourne

Victoria 3002

Telephone: 131 722

Facsimile: 03 9235 7200

Email: [inquiry@melbournewater.com.au](mailto:inquiry@melbournewater.com.au)

# Down Under Down Under

*Managing Melbourne's  
Stormwater and Sewerage  
Systems*

